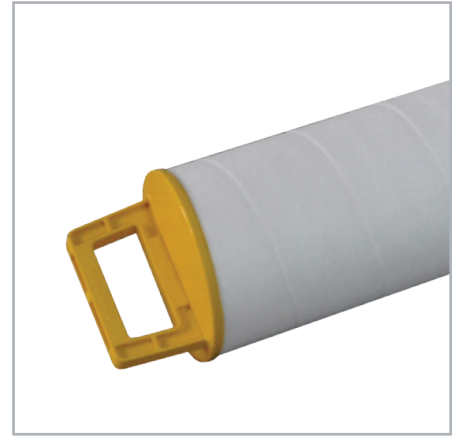


PEACH® Gemini PEACH DEPTH STYLE, GAS FILTER-COALESCING CARTRIDGES

Series PGC2

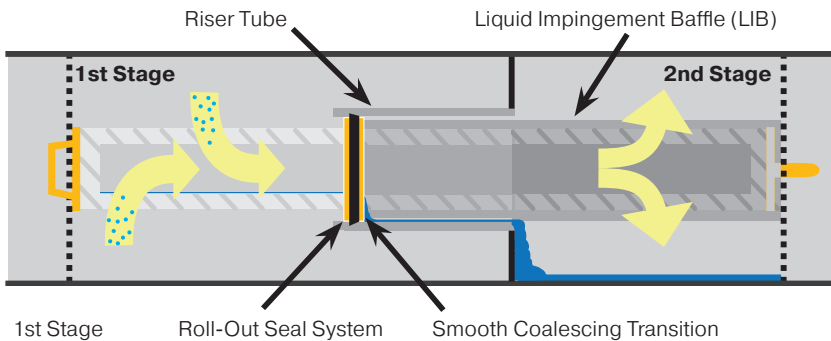
for use in PECO Series GEM2 PEACH Gemini PuraSep® 2 vessels



The PEACH Gemini, Series PGC2, cartridge is specifically designed for use with the PEACH Gemini PuraSep vessel in natural gas filter-coalescing applications. Its unique patented design provides dual flow path filtration with all the added benefits of PEACH technology. Gas flows outside-to-inside through the 1st Stage of the cartridge where

solid contaminant is captured and liquids are pre-coalesced. Then, as gas travels through the inside diameter of the cartridge at the chevron seal, a smooth transition is made and the gas flows inside-to-outside through the 2nd Stage of the cartridge removing coalesced liquids down to 0.3 microns.

PEACH® is a patented manufacturing process for making a unique depth style filter cartridge. Through thermal bonding, spiral layers of engineered filtration media are applied to conform and overlap each previous layer forming a conical helix pattern. This filter structure results in a gradient density pattern that provides an extraordinary flow path in radial, axial and helical directions. This tortuous flow path yields high contaminant loading, structural strength, maximum efficiency, and an overall outstanding filtration performance.



Removes Contaminants such as:

Asphaltenes, Coal Fines, Dirt, Iron Sulfides, Molecular Sieve Dust, Pipe Scale, Salts, Sand, Wear Metals

Coalesces Aerosol Liquid Droplets such as:

Amine, Condensate, Glycol, Lubricating Oils, Water, Low Surface Tension Fluid



ENGINEERING YOUR SUCCESS.

MATERIALS

COALESCING MEDIA	PEACH Polyester or Polypropylene
CORE	Tin Plated Steel
END CAPS	Polyester or Polypropylene
SEAL	Buna-N, Viton, EPDM, HNBR, Teflon Coated Viton (TCV)

OPERATING DATA

FLOW DIRECTION: 1st Stage: Outside-to-Inside
2nd Stage: Inside-to-Outside

MAX. TEMP: Polypropylene 180°F / 82°C
Polyester 240°F / 116°C

MAX. DIFFERENTIAL PRESSURE: 25 psid / 1.7 bar

RECOMMENDED CHANGE-OUT DIFFERENTIAL PRESSURE: 12–14 psi / 0.8–1.0 bar

NOMINAL DIMENSIONS

SIZE	O.D.	LENGTH
373	4.6" / 117mm	73" / 1854mm
382	4.6" / 117mm	82" / 2083mm
394	4.6" / 117mm	94" / 2388mm

PGC2	373			C	PL-20				
SERIES	SIZE	MEDIA / END CAP		SEAL		CORE		PERFORMANCE	
	373	CODE	MATERIAL	CODE	MATERIAL	CODE	OPTION	CODE	LEVEL
	382	Blank	Polyester	Blank	Buna-N	Blank	No Core	Blank	Standard recipe
	394	PP	Polypropylene	EPDM	Ethylene Propylene Diene Monomer	C	Core	PL-20	PL-20 recipe
				V	Viton®			PL-23	PL-23 recipe
				HNBR	Hydrogenated Buna				
				TVC	Teflon® Coated Viton®				



SCAN QR CODE FOR ADDITIONAL PRODUCT INFORMATION INCLUDING AVAILABLE PART NUMBERS

For technical questions contact ipf.technical@support.parker.com or call 940-325-2575

To order, contact a support representative at ipf.support@support.parker.com or call 940-325-2575

Purchasing details: Request a quote at ipf.quotes@support.parker.com

Parker IPF Standard Terms & Conditions apply www.parker.com/IPF-Aftermarket-TOS

- PL-20 and PL-23 recipes come with cores.
- Teflon® and Viton® are registered trademarks of E. I. du Pont de Numours and Company.



PERFORMANCE

STANDARD RECIPE:
99.99% of 0.3 micron & larger solid particles
99.8% of 0.3 micron & larger liquid droplets
≤ 50 PPB (wt) effluent

PL-20 RECIPE
99.99% of 0.3 micron & larger solid particles
99.99% of 0.3 micron & larger liquid droplets
≤ 8 PPB (wt) effluent

PL-23 RECIPE
99.99% of 0.3 micron & larger solid particles
99.99% of 0.3 micron & larger liquid droplets
99.98% of 0.1 micron & larger liquid droplets
≤ 2 PPB (wt) effluent